

"

"

\*

• •

---

---

.

.

.

.

"

.

"

.

.

---

---

:

.

-

-

\*

" "

---

:

---

---

"

---

"

"

---

"

(1)

**(patching)**

---

---

:(1)

(1) " \_\_\_\_\_ "

:

-1

:1-1

:

(1946)

.(1 )

.[6]

(1962)

.1990

(1964)

( 1967)

.2000

1/2000

:(1)

- 122 -

[8]

( 1991 ) .(2)

[10]

:2-1

( 1997 ) : (1997) .[7] (1995)  
(381)

( )

(2001)

(37)

3506

(64)

(1)

\_\_\_\_\_

: **:4-1**

: **:3-1**

:

\_\_\_\_\_

\_\_\_\_\_

: (1)

( )

Architectural Monuments

Historical Buildings

( )

" "

**(2) patching**

•

•

•

(1)

•

•

(3 ) .

:

•

[4] .

Patching :A small piece of material affixed to another, larger piece to conceal, reinforce, or repair a worn area, hole, or tear.

" : (1)

[4] .

:(Project developer)

•  
: 2-2 )

: (

:  
(<sup>1</sup>)

)  
(

)  
(4 .( )

- : -2  
: :1-2

- : •  
( ) : •

:3-2 - 2 405 : •  
:(2003 ) .2 366

: :1-3-2 .(<sup>2</sup>) •

(2358 2357) : (1)  
2357

[1]  
: (2)

- :2-3-2  
:(2359)

(2 79 ) 2358

)

366 .( 1933 ( 5 ) .(

.(<sup>1</sup>)

(6 ) .2003

:3-3-2

:2003

" "

)

) ( [9]

) ( " : ( 1981 )

(

-

-

.(6 ) (5 ) .

(<sup>1</sup>): ما أضفى على المساجد أهمية كبيرة أخرى هو امتداد واتساع دورها التعبدي، بتأديتها أيضاً دوراً ثقافياً إسلامياً وذلك كماكن



( : ) • :4-3-2  
:

)  
[12] (

(7 ) . :3

:  
:1-3

SWOT :3-3 .(1)  
: :2-3

.(8)  
:4

:  
:

: )  
:1-4

(5 ) .(...  
:

)  
(

.(9 )



•

.(13 )

•

•

•

: :2-6

" "

•

•

•

•

.[5]

.(14 )

: :6

:1-6

:

[11]



:5 -6

:

.(15 )

:\_\_\_\_\_ :8

•

•

( )

•

:7

:

•

•

.(4 )

•

( )



''''

---

•

•

❖

❖

•

❖

•

''''

•

---

---

:

.1

❖

.2

❖

.3

: -9

•

.4

•

.5

.10

.6

.11

.7

.12

.8

.9



[13] ( 1912 )

(1)



(2011 )

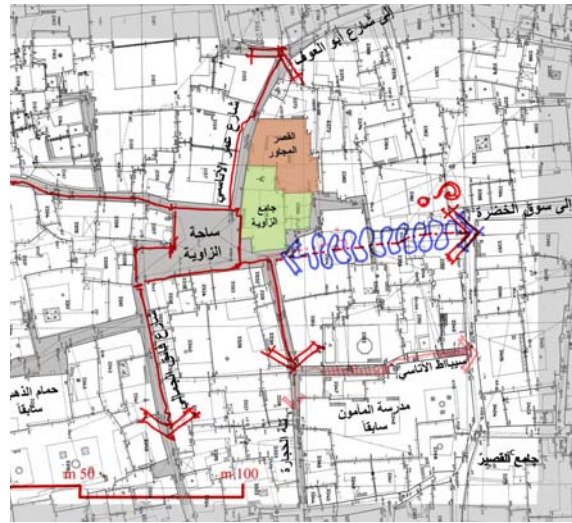
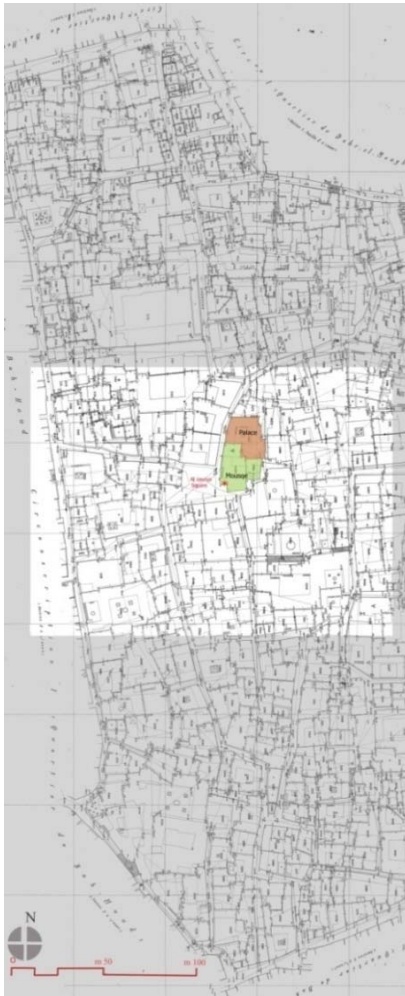
(2)



(3)

[14] :





( ) .

2+1 :  
( )

(4)





(2003-3-17 )



.2003



(5)

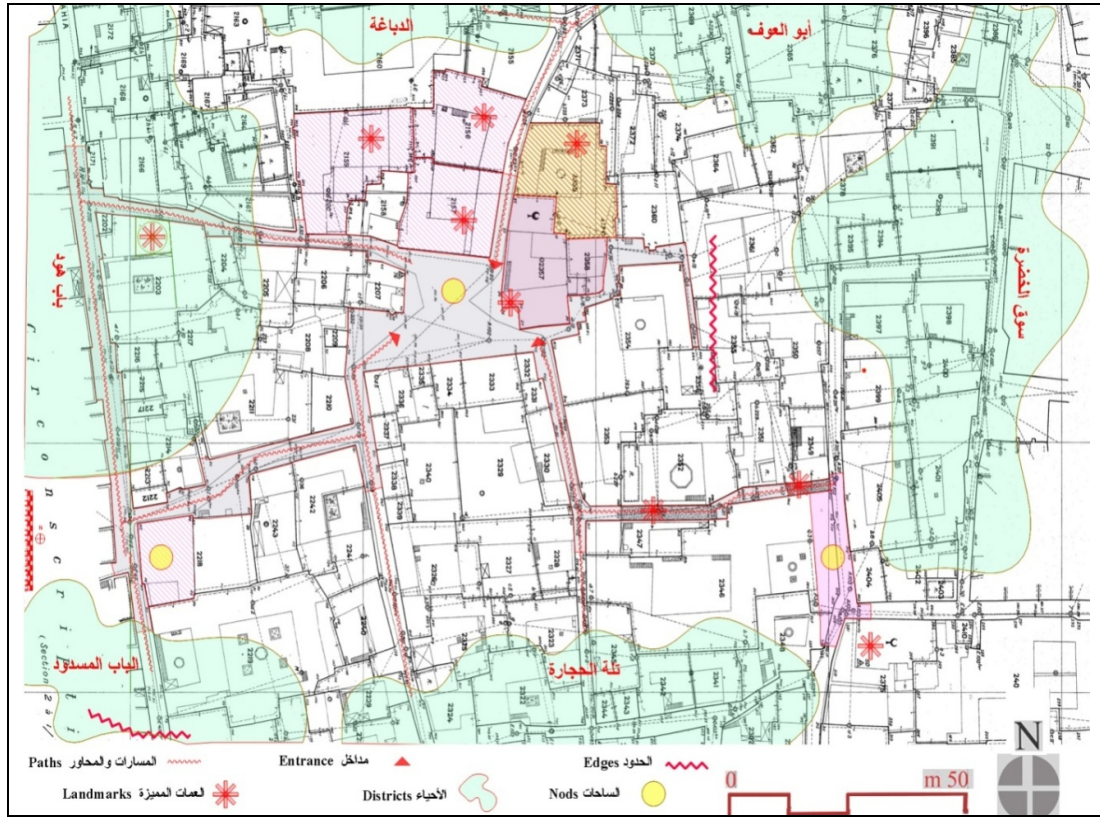


( )



(6)

|           |           |
|-----------|-----------|
| ( )       | districts |
| gates ( ) | landmarks |
|           | edges     |
| 2 700 )   | nodes     |
| )         | paths     |
| ( )       |           |



(

)

(7)

الجدول (1) مصفوفة السياسات والاستراتيجيات للمشروع (الباحث)

|     |     |
|-----|-----|
|     |     |
|     | ( ) |
|     | ( ) |
| ( ) |     |
|     | ( ) |
|     |     |

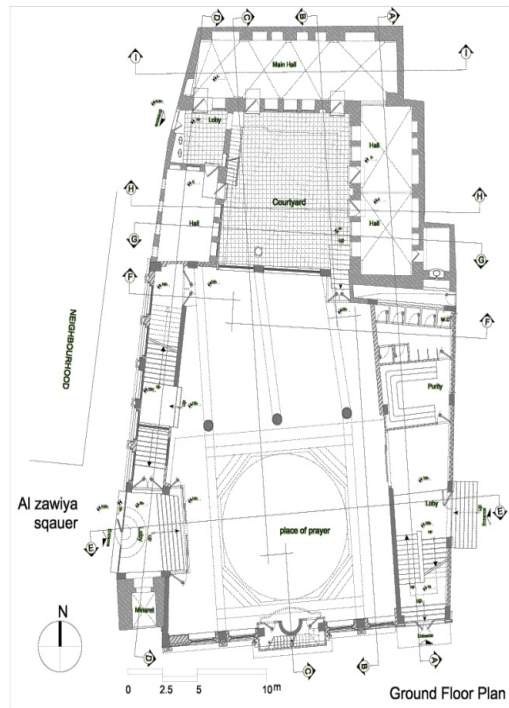
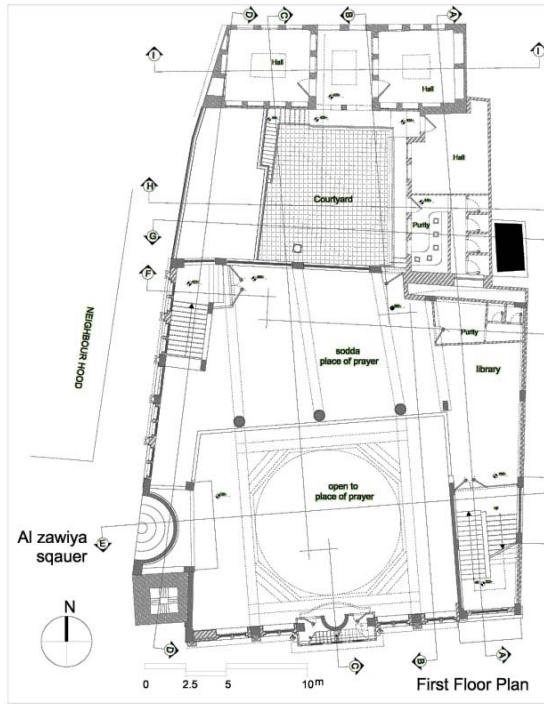
|                                  |                 |
|----------------------------------|-----------------|
| : Strength                       | :Weakness       |
| : Threats                        | : Opportunities |
| :( <sup>1</sup> ) considerations | : constraints   |



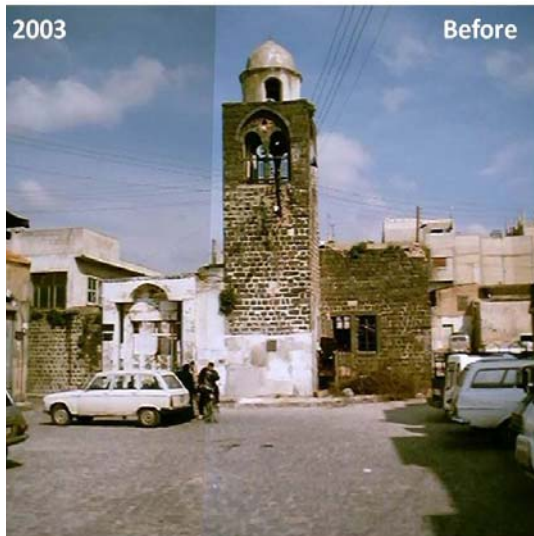
( ) SWOT (8)

(b)

[3].

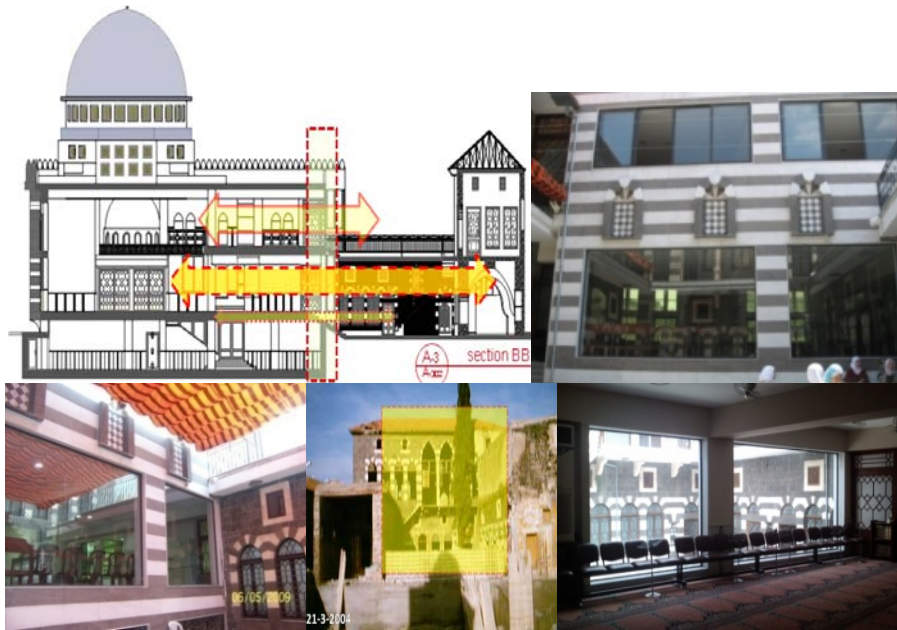


(9)



( )

(10)



( )

(11)



( )

(12)

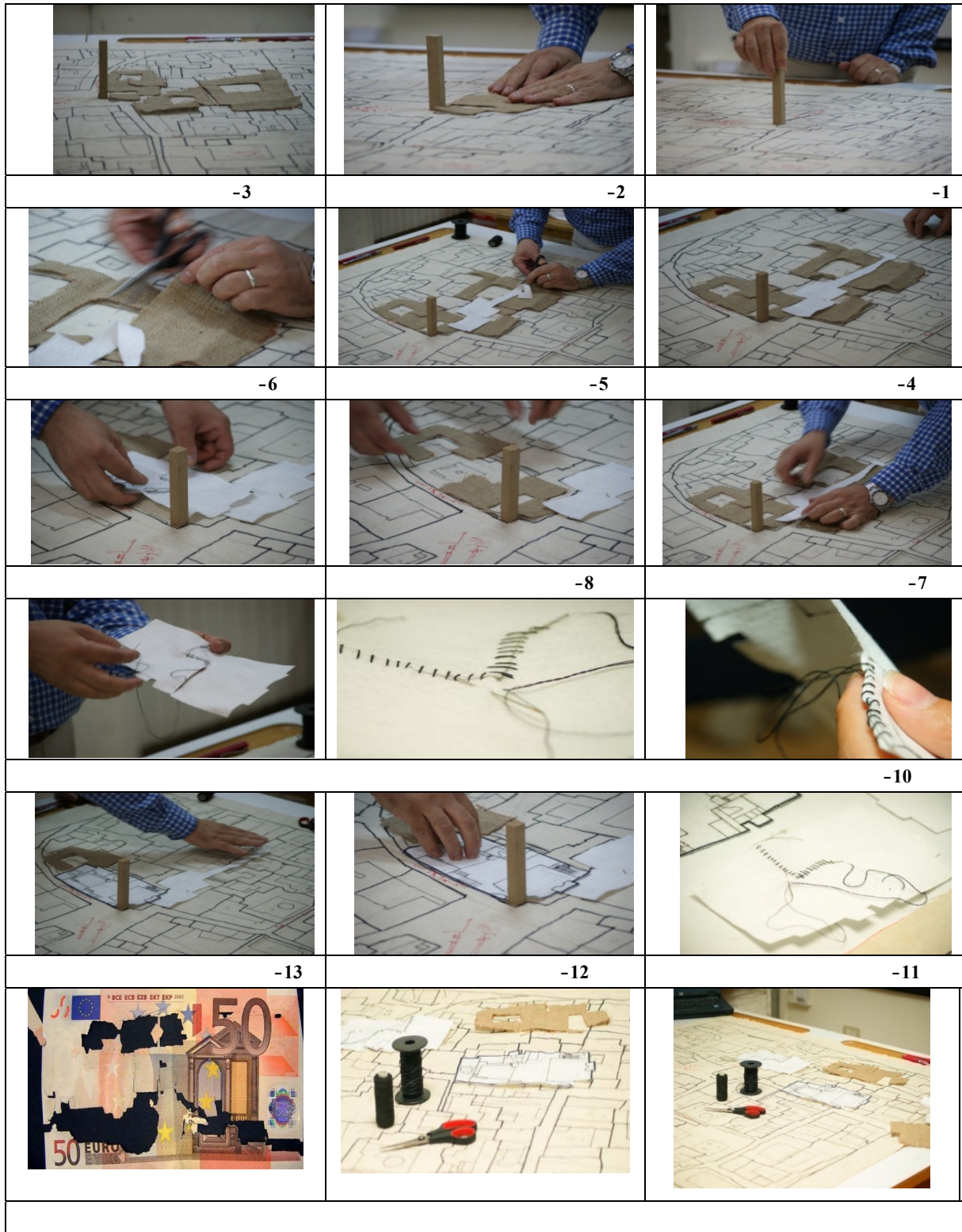


(13)



(14)





(15)

**Search References:**

- Brahim, Abdul Baqi / and others - "**Upgrading the Built Environment of Cities**" - the secretariat of the city of Jeddah - 1986.
- Ansari, Rauf - "**Mosques Architecture / study in the history of architecture of mosques during the Islamic eras**" - Beirut, Dar Alyanbou.1996.
- Awadi Al wakel, Shafaq – "**Urban Planning, Principles - Foundations – Applications**" - Cairo - the first part of 2006.
- Alferoz Abadi Majed Aldeen - "**Qamouse al Mouhet**" –Alresala Foundation- Beirut --2005.
- Almasri, Ghaidaa - "**Eligibility of Women in Islamic Sharia**" - PhD thesis - Faculty of Sharia - Damascus University --2005.
- Jabbour, Zuhair - "**Strategies for Maintaining Old Arab City (Homs revive the ancient city)**" - the Arab Towns Organization - Heritage Conference in Homs- 2001.
- Jabbour, Zuhair / Jandali, Bahgat / Asfoura, Salah - "**Updated Organizational Plan of the Old Homs,**" Al-Baath University, Faculty of Architecture, Homs, Syria, March 1995.
- Harfouch, / Khuzam / Abdul Hadi - "**Construction System in Homs,**" the Arab Towns Organization "- Heritage Conference in Homs --2001.
- Al-Zahrawi, Naim Salem- "**the Families of Homs and Places of Worship**"- Part II - Taha Publishing House - Homs --1995.
- Al-Zahrawi, Naim Salem - "**Architecture Al ablaqyh Monuments and Heritage in Homs**" - Baath University Press --2006.
- Eid Abdel Samie, Muhammad / Mohammed Hassan newbies - "**Islamic Waqf and its Role in Preserving the Historic Buildings**" - First International Conference on Architectural Heritage in Islamic countries - Riyadh, 2010.
- Kevin Lynch, "**The Image Of The City**", The MIT Press - Cambridge London -1960 - (46).
- <https://www.facebook.com/OldHomsMemories>
- [http://spiritcloth.typepad.com/spirit\\_cloth/worn/](http://spiritcloth.typepad.com/spirit_cloth/worn/)

• Kevin Lynch, "**The Image Of The City**", The MIT Press - Cambridge London - 1960 - (46).

• <https://www.facebook.com/OldHomsMemories>

• [http://spiritcloth.typepad.com/spirit\\_cloth/worn/](http://spiritcloth.typepad.com/spirit_cloth/worn/)